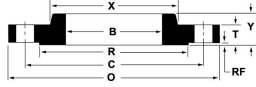
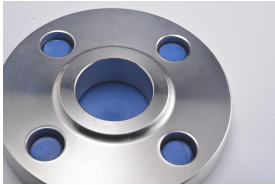


Class 400



Note:

- All dimensions are in inches.
- These flanges will be furnished with a 1/4" raised face unless otherwise specified.
- Flat face option available.
- Standard Bore will be furnished unless otherwise specified.

Nominal Pipe Size	Outside Diameter	Thickness	Raised Face Diameter	Length Thru Hub	Hub Diameter	Bore	Approximate Weight	Bolt sCircle	Number of Holes	Diameter of Holes
	(O)	(T)	(R)	(Y)	(X)	(B)	(lbs)	(C)		
1/2	3.75	0.56	1.38	0.88	1.50	0.88	2	2.63	4	0.63
3/4	4.63	0.63	1.69	1.00	1.88	1.09	3	3.25	4	0.75
1	4.88	0.69	2.00	1.06	2.13	1.36	4	3.50	4	0.75
1 1/4	5.25	0.81	2.50	1.13	2.50	1.70	5	3.88	4	0.75
1 1/2	6.13	0.88	2.88	1.25	2.75	1.95	7	4.50	4	0.88
2	6.50	1.00	3.63	1.44	3.31	2.44	9	5.00	8	0.75
2 1/2	7.50	1.13	4.13	1.63	3.94	2.94	13	5.88	8	0.88
3	8.25	1.25	5.00	1.81	4.63	3.57	16	6.63	8	0.88
3 1/2	9.00	1.38	5.50	1.94	5.25	4.07	21	7.25	8	1.00
4	10.00	1.38	6.19	2.00	5.75	4.57	26	7.88	8	1.00
5	11.00	1.50	7.31	2.13	7.00	5.66	31	9.25	8	1.00
6	12.50	1.63	8.50	2.25	8.13	6.72	44	10.63	12	1.00
8	15.00	1.88	10.63	2.69	10.25	8.72	67	13.00	12	1.13
10	17.50	2.13	12.75	2.88	12.63	10.88	91	15.25	16	1.25
12	20.50	2.25	15.00	3.13	14.75	12.88	130	17.75	16	1.38
14	23.00	2.38	16.25	3.31	16.75	14.14	180	20.25	20	1.38
16	25.50	2.50	18.50	3.69	19.00	16.16	235	22.50	20	1.50
18	28.00	2.63	21.00	3.88	21.00	18.18	285	24.75	24	1.50
20	30.50	2.75	23.00	4.00	23.13	20.20	345	27.00	24	1.63
22	33.00	2.88	25.25	4.25	25.25	22.22	405	29.25	24	1.75
24	36.00	3.00	27.25	4.50	27.63	24.25	510	32.00	24	1.88